



SYSTEM  
SOFTWARE **K**

**The Drafting Clinic  
Canada Limited**  
Wide Format Imaging Solutions

1500 Trinity Drive, Mississauga, Ontario L5T 1L6

# KIP 940

*High Production Color Print System*

Phone: (800) 567.3222 Email: sales@dccltd.ca Web: www.dccltd.ca



# KIP 940 HIGH PRODUCTION COLOR PRINT SYSTEM

## High Production Color Print System

The KIP 940 is a color and B&W high production print system. The system is a comprehensive solution for all types of wide format printing tasks that require the highest levels of quality and performance.

KIP System K Software Suite provides an enhanced user experience and exceptional productivity for the seamless control of color and black & white print demands. Features include:

- Touchscreen tablet navigation.
- Standardized system icons with tile interface.
- Print submission applications with systems management, configuration and systems status.
- Software applications feature ribbon command bar with extended choice of functions.
- SNMP protocols, cost center control and cloud collaboration.
- System K Windows® Driver, WHQL certified, touch PC compliant with simplified / advanced functions and systems status.



## Ultra High Quality Printing

The KIP 940 saves serious time and money – making ultra high quality wide format printing more cost effective than ever before.

Printing is faster. Operation is simpler. Finishing is automatic. Reliability keeps you up and running. Image quality will keep your customers coming back for more.



## Integrated USB Drives

The large display area provides plenty of room to control job queues, review system status, print from USB or network locations – and get a large, full color look at image files before you print, to make changes and see your results immediately.

## Touchscreen Control

A large touchscreen makes operation simple, even for personnel without special training. All major system functions are available at your fingertips from a single interface. The integrated color touchscreen of the KIP 940 provides a powerful combination of control plus convenience – because you don't have to leave the printer to perform the command functions that make your work more productive.





### B&W & Color Printing

The KIP 940 color and B&W LED production printing system is based on a unique design that lowers the individual operational costs of both color and B&W print production.



### Easy Trim

A button is conveniently located in each media deck for quick, automatic roll trimming after loading. This simple process ensures reliable and accurate performance for continuous print production.



### Image Quality

Four advanced KIP LED imaging heads provide outstanding 600 x 2400 dpi resolution. LED imaging heads provide direct toner application for razor sharp details.



### Large Capacity Toner Cartridges

Each CMYK cartridge contains 1,000 gms of toner for a total capacity of 4,000 gms – allowing longer uninterrupted color and B&W print runs for continuous system productivity.



### Production Printing

The KIP 940 print system offers superb resolution at remarkable print speeds:

- Up to 4,200 sq. ft./390 sq. m. hour in B&W
- Up to 3,500 sq. ft./325 sq. m. hour in color



### Automatic Image Calibration

An exclusive single belt drive system performs automatic media calibrations for precise imaging, and bold, expressive color output. This simplifies changing media types.



### Quick Switch Technology

KIP 940 print technology eliminates roll switching delays for increased productivity. Three media decks and an auto sheet feeder delivers mixed print sizes at full production speed.



### Extended Print Lengths

For maximum productivity and operator efficiency, the KIP 940 handles print images up to 130' / 39 meters long on any media type from any of its 3 integrated media roll decks.



### Media Load Assist

An ergonomic spindle system simplifies the process of loading the 4,500 sq. ft. / 418 sq. m. media capacity and the printer automatically advances the media without user assistance.



### Large Color Touchscreen

A large color touchscreen makes system operation simple, even for personnel without training. All major system functions are available at your fingertips from a single interface.



In addition, an integrated automatic cut sheet feeder provides expanded versatility for handling specialty media types. The KIP 940 features a robust braking system designed to ensure uniform sheet sizes from all three of its integrated media drawers at extremely high speeds, regardless of media type, print size or image complexity.

### Media Capacity

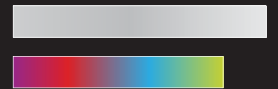
The KIP 940 easily accommodates high demand printing and long unattended runs via three integrated, auto-loading media roll drawers. The system handles media rolls from 11" to 36" / 297 mm to 914 mm wide and provides ultra fast switching between rolls for collated sets of varying sizes or media types with no delay between prints.



## KIP 940 PRINT PRODUCTION

Up to 4,200 sq. ft. / 390 sq. m. hour in B&W

Up to 3,500 sq. ft. / 325 sq. m. hour in Color



### High Speed B&W Printing

The KIP 940 produces black & white prints at a blazing 4,200 square feet / 390 sq. m. per hour, making it competitive with the print production generated by dedicated black and white LED print systems.

In black & white only mode, the print media completely bypasses all color imaging units. This process increases system efficiency and lowers the overall cost of operation.



### High Speed Color Printing

With an operational speed of up to 3,500 square feet / 325 sq. m. of color print production per hour, the KIP 940 is the single most productive wide format LED color print system.

The unprecedented productivity of the KIP 940 addresses the current reality of demanding print runs and compressed delivery times coupled with the highest quality expectations.



The KIP 940 integrated folding and finishing system automates wide-format document finishing by providing folding, stacking and collation in a compact design. The online folder is fully integrated with the KIP 940 print system and software apps to provide a total print management solution.



### Stacking & Folding

The KIP 940 integrated stacking system improves the efficiency and productivity of your print production environment by providing a convenient place to stack multiple prints. Unattended print runs can be scheduled with peace of mind due to bi-directional communication with the KIP 940 print system.



Best in class productivity is achieved from high resolution image capture and data transfer technologies for high speed copy and scan throughput without delays. World-class flexibility is delivered via the ability to scan face up or face down and scan thick mounted originals and individual sheets of paper from a single unit.

### Copying & Scanning

The KIP 940 provides efficient, high speed hard-copy reproduction workflow. Exceptional image quality is achieved through true 600 x 600 dpi optical resolution via a choice of integrated KIP scanner with advanced optics and delicate original transport process for pixel-perfect images.





### Technical Document Creation

- Color 3D Renderings
- Graphical Inlays
- Exploded View Schematics
- Technical Diagrams
- Manufacturing Plans
- Architectural Renderings
- Geographical Maps

### Designed for any Production Environment

The KIP 940 color and B&W print system is designed for technical, graphic and office document users who require high demand output, precise imaging and bold, expressive color fidelity.

The system is a comprehensive solution for a range of wide format printing tasks spanning everything from architectural, engineering, and construction documents—to maps, posters, signs, and photo enlargements—without sacrificing quality or performance.



The KIP 940 system produces lightfast; UV-proof prints which do not fade or exhibit color deterioration from exposure to light. Colorful banners, bulletins, and signs posted in hallways or placed in windows attract attention while large, full color business-style graphics deliver the right message at meetings, sales presentations, and public viewing areas.

KIP 940 prints are ideal for most applications because of their ability to deliver high resolution image quality at production print speeds with exceptionally low operational costs.

### Display Graphic Creation

- Commercial Printing
- Gaming Industry
- Hotel Industry
- Digital Proofing
- Point of Purchase
- Graphic Arts
- Healthcare
- Education
- Entertainment
- Beverage/Food
- Distributors
- Exhibition
- Legal Graphics
- Corporate Printing

**Application Versatility**

- Display Graphics
- Business Graphics
- Technical Documents

**CMYK Dry Toner System**

- Lightfast
- Odorless
- Waterproof Images
- Ready for Finishing

**Expanded Range of Applications**

- Indoor Media
- Outdoor Media



As traditional technical documents and creative applications converge, wide format document production requirements have become increasingly diversified to include 3D color renderings, graphic inlays, exploded view schematics, technical diagrams, manufacturing & architectural plans and maps of all kinds.

The KIP 940 enables business professionals to effectively convey ideas and information by leveraging visual appeal and technical accuracy in Color or B&W.



**Powerful Print Control for any Production Environment**

The KIP 940 system features a diversified software suite that forms the most open, integrated and powerful wide format color and B&W imaging system available.

From PC & web-based viewing and printing of documents in a wide range of formats, to professional color management, application drivers, touchscreen & cloud printing, KIP 940 software streamlines production print work, saves time and increases productivity.

**Software Application Specifications**

Standard	Touch Screen Printing: mono/color images from USB or Network locations Certified AutoCAD® Drivers: Currently released versions up to 2015 or cloud Microsoft® Certified Windows Drivers: Print in B&W & Color KIP Cost Center: PC based application to review toner/service costing on the 940
Technical	KIP PrintPro: PC based submission utility features ribbon interface job building KIP PrintPro.net: Web Browser based submission utility delivers powerful browser independent features Cloud Printing: KIP Web Apps offer the ability to produce large prints using nothing more than an email attachments and key words
Graphics	KIP GraphicPro Professional Color Management Application

# SYSTEM SOFTWARE **K**

## A new generation of wide format functionality

We invite you to experience the intuitive interface, extensive functionality, advanced navigation and cloud collaboration for your production environment. KIP System K Applications are uniformly integrated with KIP Color and B&W copy, scan and print solutions.

### SYSTEM K

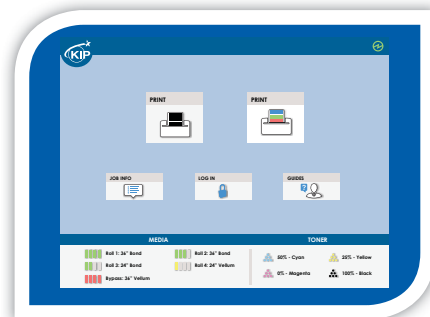
### MULTI-TOUCH SCREEN

#### KIP Multi-Touch Touchscreen

All system functions for the KIP 940 are performed through an integrated, 12" multi-touch tablet-like color display to print and manage both color and B&W documents in the queue.



Vivid 12" Color Multi-Touch Display | Fully Articulating Viewing Angle | Print in B&W and Color | Super View for Swipe, Pinch, Spread and Rotate | Print Directly from Removable Media, the Cloud and Local Mailboxes | Full Color User Guides | Integrated Print Previews | On-screen Set Copy Editor | Manage History Queue



#### KIP Cloud Connect

Sharing online content via popular Cloud Services has become a critical collaboration tool. Scan to and print from the cloud directly at the multi-touch display.



Select from Multiple Cloud Services | Print from KIP Cloud Connect | Scan to KIP Cloud Connect | Unlimited Cloud Connections | Single or Multiple Files | Choose Files from Multiple Cloud Services for Single Print Job | Easy Configuration from Multi-Touch Screen | Collated Sets Printing







## SYSTEM K

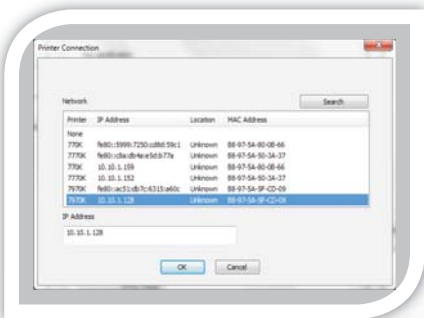
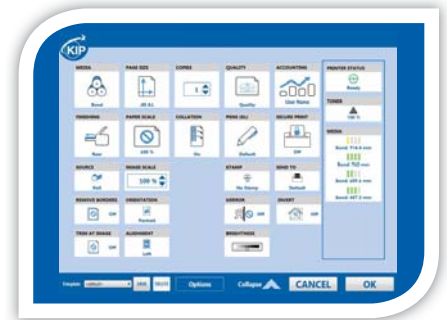
## PRINT DRIVERS

### Windows® Driver

The KIP Windows® Driver Pro is Microsoft® WHQL certified, meeting exact standards of reliability and quality.



Fast Spooling for Multiple Copies or Sets of Color or B&W Documents | Displays Real-Time System Status | Information Set Collation | Provides Current Media Information | Media Selection | Secure PIN Printing | Send Job on Hold | Save Templates | Brightness Adjustment | Unlimited Image Quality Presets | Pen Preset Selection



### AutoCAD® Driver

The KIP certified AutoCAD® Driver provides integrated printing from within Autodesk® software applications such as AutoCAD®, AutoCAD® LT and DWG TrueView.



Fully Compatible with Current Versions of AutoCAD® | Color or B&W Printing | True HDI AutoCAD® Driver | 32 and 64 Bit Operating System Compatibility | Real-Time Media Status | Custom Media Size Configuration | Media Saving by Auto Rotation | Advanced Color Mode Image Type Selection | Dither Pattern Control for B&W Lines vs Aerial

### KIP Data Security Features

At KIP, security is paramount. As a world leader in the development of digital wide format production technology, KIP is committed to keeping digital information safe and secure.



Image Overwrite | Removable Hard Disk Drive Accessory Kit | System K Operating System Windows® Embedded System 7 | Standard Security Updates | Data Encryption and Virus Scanning Applications | KIP Secure Print

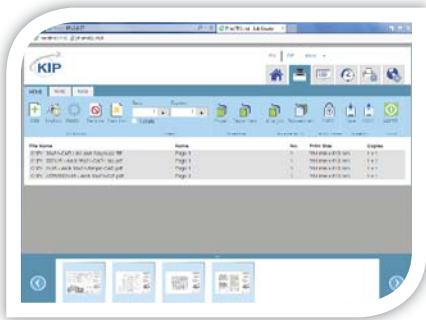
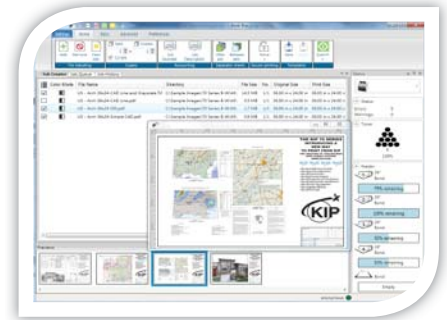


## KIP PrintPro

Designed for Windows® PC's, KIP PrintPro is an intuitive system management and print submission application for the complete range of KIP Color and B&W Systems.



Multiple Copies or Collated Sets | WYSIWYP Image Preview | Individual File Settings for Job Matrix Templates | Multi-Page Settings | Color Adjustments and Filter Selections | Email Notification | Customize Job Build Matrix Windows | Document Folding and Stamping | HPGL Pen Preset Selection | Windows® 7/8 and Vista Compatible (32 and 64 Bit) | Customize System and Folder Presets | Manage Print Queue | KIP Secure Print



## KIP PrintPro.net

KIP PrintPro.net provides KIP Color and B&W Systems with the most feature rich browser based print submission and system management application on the market.



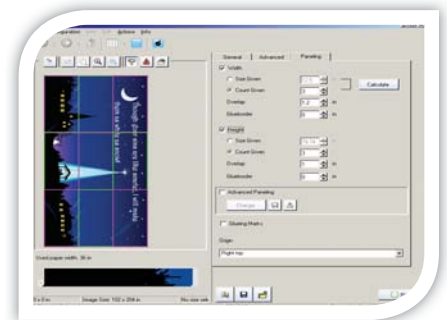
Multiple Copies or Collated Sets | WYSIWYP Image Preview | Individual File Settings for Job Matrix Templates | Multi-Page Support | Color Adjustments and Filter Selections | Email Notification | Document Folding and Stamping | HPGL Pen Preset Selection | Transfer Files from KIP Printer Mailbox | Customize System and Folder Presets | Manage Print Queue and User Settings | KIP Secure Print

## KIP GraphicPro

KIP GraphicPro is a full featured RIP for graphic and technical production printing on KIP Color Systems that fully supports graphic and technical production printing.



Unlimited Workstation Licenses | B&W, Grayscale and Color Printing | Job Editor for Mixed B&W and Color Sets | Multi-Page PDF/TIF | Filter Editor for Color Control | ICC Profile Support for CMYK and RGB Color Management | Factory / Custom Media Profiles | Nesting Single and Multiple Images | Automatic Horizontal and Vertical Paneling | Area of Interest (Zoom to Area and Print) | B&W and Color Editing Tools | Job Monitor



## KIP Smart Print

KIP Smart Print & Smart Scan are flexible approaches to delivering print and scan services – one that responds to mobile business needs by providing a driverless cloud solution.

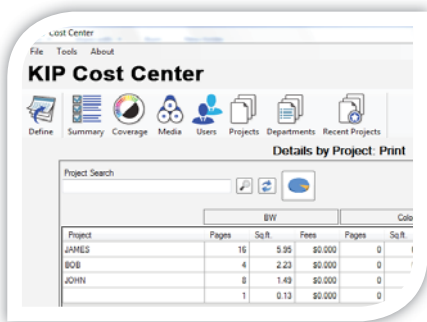


Submit Print Ready Files via Email Attachments | Works with any Web Enabled KIP Printer | Print B&W or Color Documents | Scan Full Size Documents | Optional Keywords Provide Expanded Flexibility

### KIP Accounting Center

The KIP Accounting Center consolidates control of user account data and printing rules for all copy, print and scan activities for KIP Color and B&W Systems. All System K Print Submission Apps are integrated with KIP Accounting Center.

**A** Username and Two Customizable Fields | Import User Data Using LDAP | Clear Fields After Each Job Submission | ASCII Import/Export | Easily Update User, Project and Department Data | Automated KIP System Update via Scripting | Password Protect any or all Data Entries | No Special Data Servers Required



### KIP Cost Center

The KIP Cost Center application retrieves extensive log files directly from KIP Systems and automatically generates production reports for user, project and department level accounting data.

**C** Integrated with all KIP Apps and Touchscreen Systems | Track Color and B&W Copy, Scan and Print | Easy to Understand Graphical Reports | Average Toner Coverage by Percent | Daily Print and Scan Volume for Color and B&W | User, Project and Department Categories | Access the Details of the Last 100 Jobs | KIP Toner Costs by Color and B&W | KIP Maintenance Costs | KIP Scanner Costs by Color and B&W

### KIP Card Reader Systems

KIP offers customers two solutions to secure the KIP Systems using contactless card readers.

**C** **Contactless Card System Integration:** Standard FeliCa Cards | Various Contactless Cards | User Authentication Linked to Card | Load User and System Presets | Load User Cloud and SMB Credentials | Track Usage by Card | Release User Jobs at Touchscreen | KIP Accounting Center Integration | KIP Cost Center Integration

**Common Access Card Solution:** Enables/Disables Network Access | Designed for Easy Installation | Meets Homeland Presidential Security Directive (HSPD-12) | Local and Network User Authentication Using LDAP or Active Directory | Netgard MFD In-Line Network Appliance



### KIP Printer Status / SNMP

The KIP Printer Status application is the ideal solution for providing centralized status updates and information to administrators and users over a local or Wide Area Network.

**S** SNMP Communication to KIP Printer | PC Based Windows® 7/8 Application | Monitor Status of KIP Printers | Auto-Detect KIP Printer (LAN) | Visual Notification for Machine Status | View all KIP Printers on a Single Screen | Automated Meter Read

# SYSTEM SOFTWARE **K**

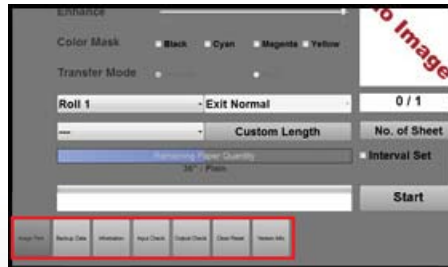
## Print Management Solutions

# KIP Touchscreen Technical Interface

The KIP Touchscreen Technical interface is a comprehensive program for the control of KIP Systems, Installation & Technical Support.

The touch intuitive and versatile interface includes mode tiling which simplifies the technical experience and management of the KIP System.

- Integrated with KIP Color plus Black & White Systems
- Manage and Modify Printer Functions and Settings
- Review Printer Status and Operational History



## Print Management Solutions

# KIP Custom Media Manager

The KIP Custom Media Manager is a graphic user interface that allows the operator to identify and customize names to a wide range of media types and the KIP Systems specifications.

- Integrated with KIP Color plus Black & White Systems
- Automatically Adjust Systems Parameters
- Descriptive Media Categories

